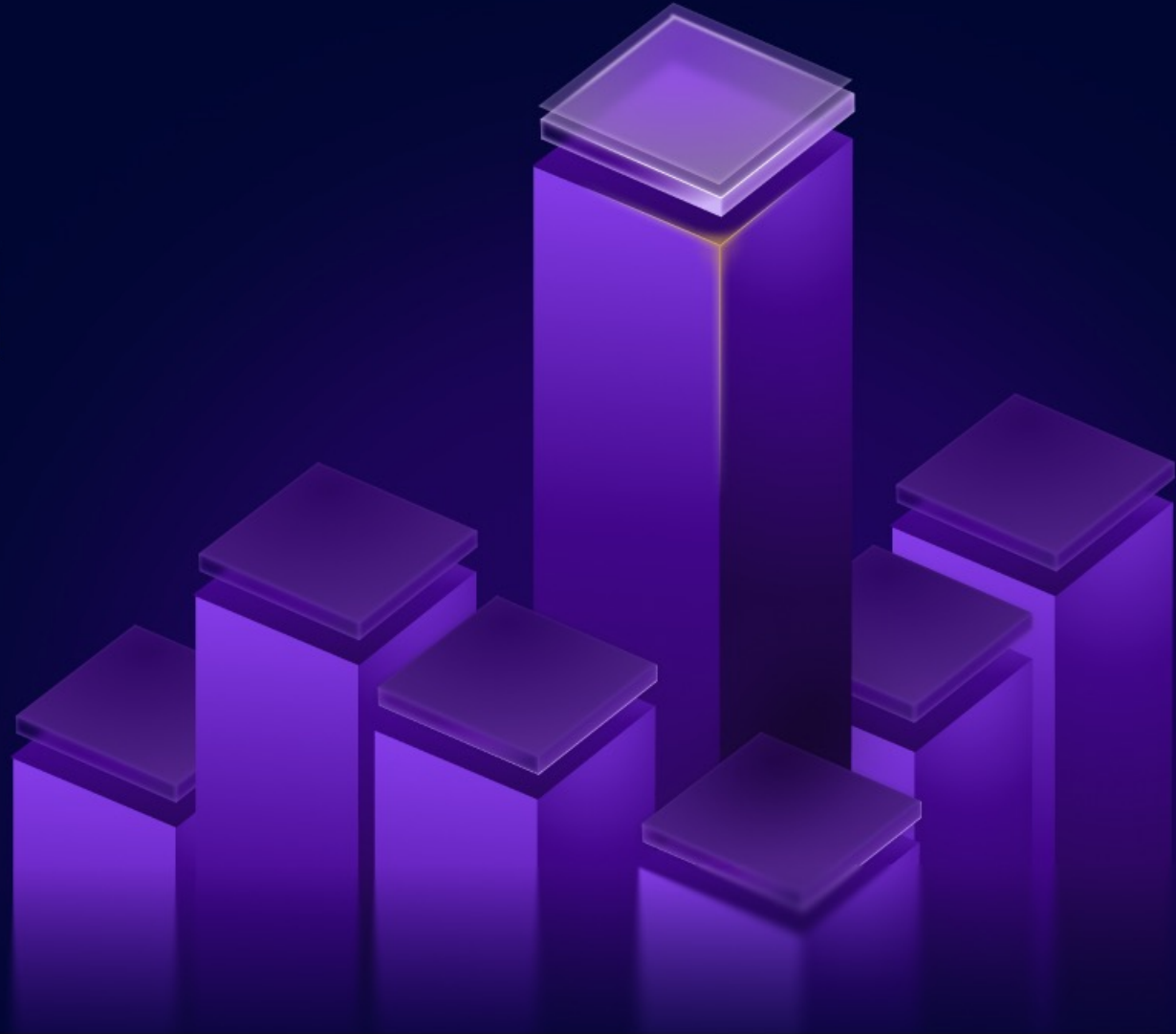


JioBlackRock Large Cap Fund

Ride India's growth story

 24 March 2026 - 7 April 2026

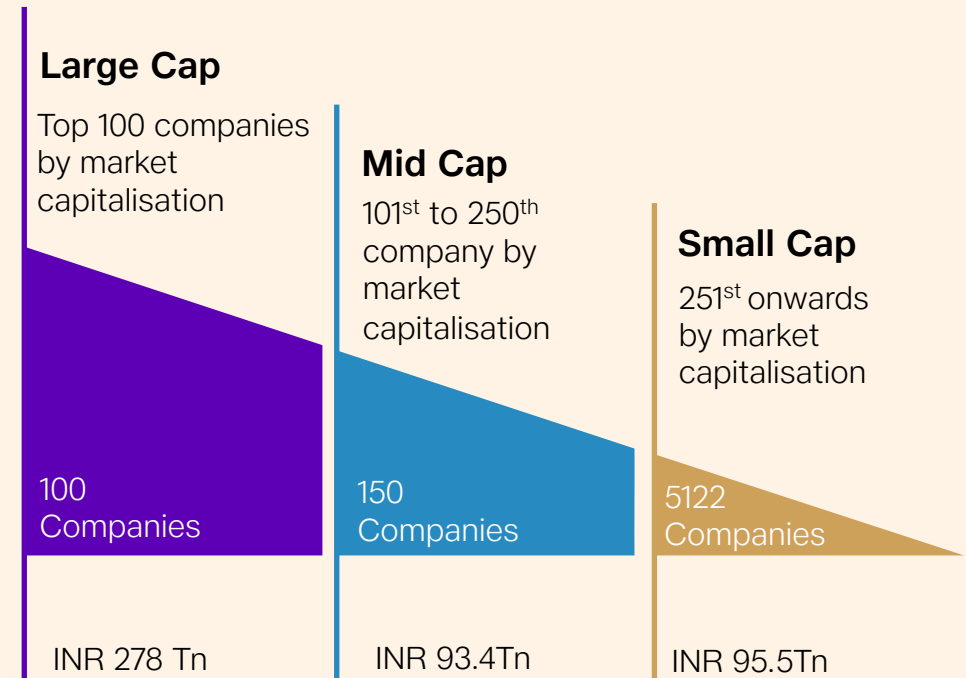


Strong roots form the foundation of the market

Like a banyan tree, a large-cap fund stands on deep roots, spreads steadily over time, and offers relative stability and shelter across market cycles.



Large Cap represents majority of Market value and liquidity

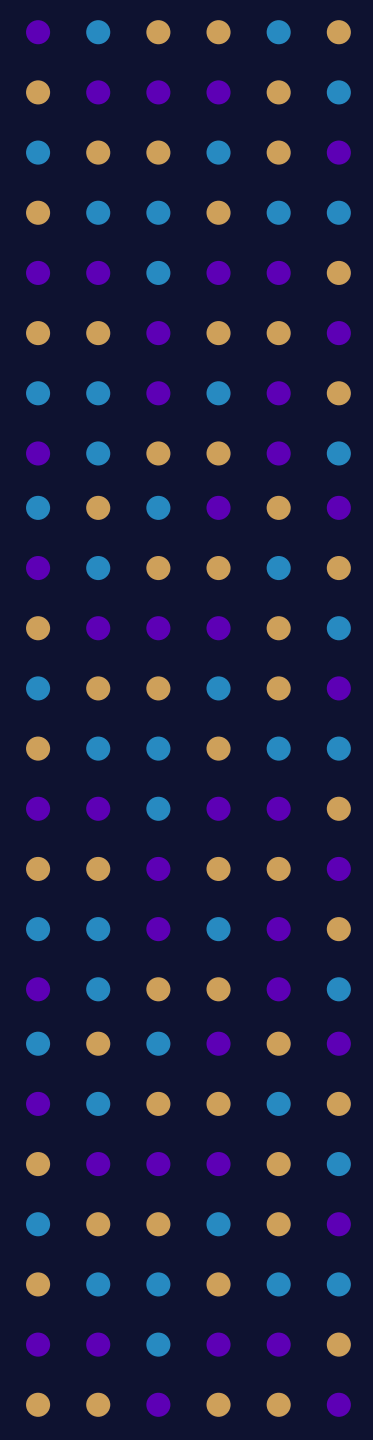


Source: AMFI. Average Market Capitalisation as on 31st Dec 2025



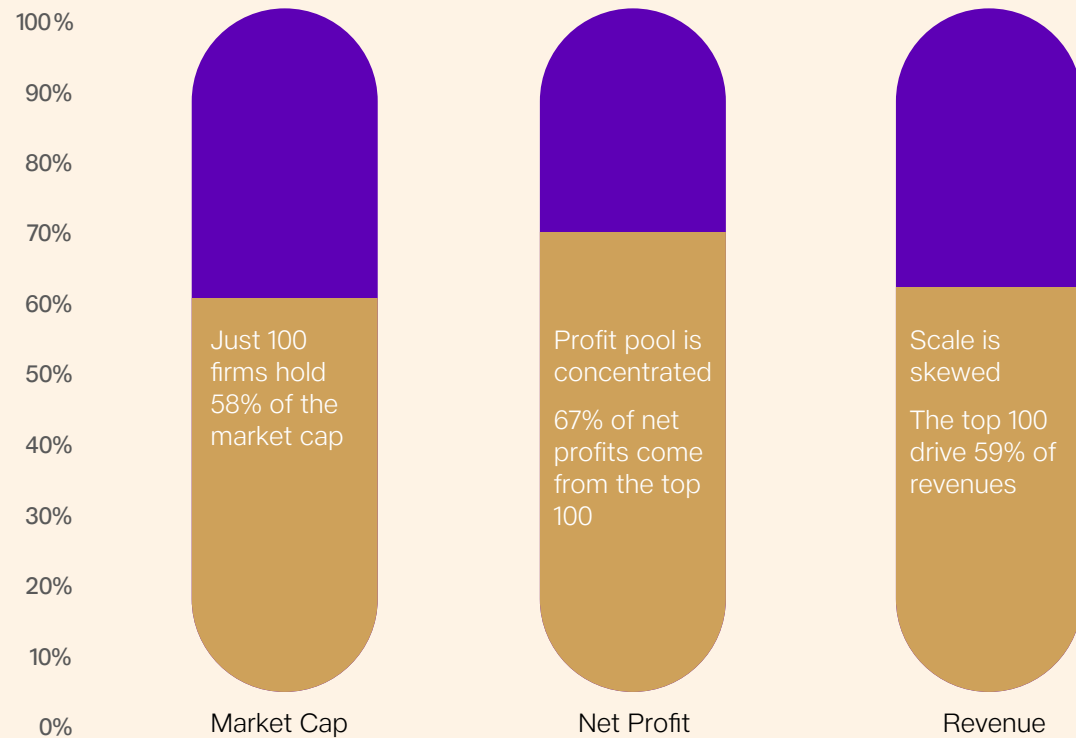
BlackRock.

Why Large Cap Fund?



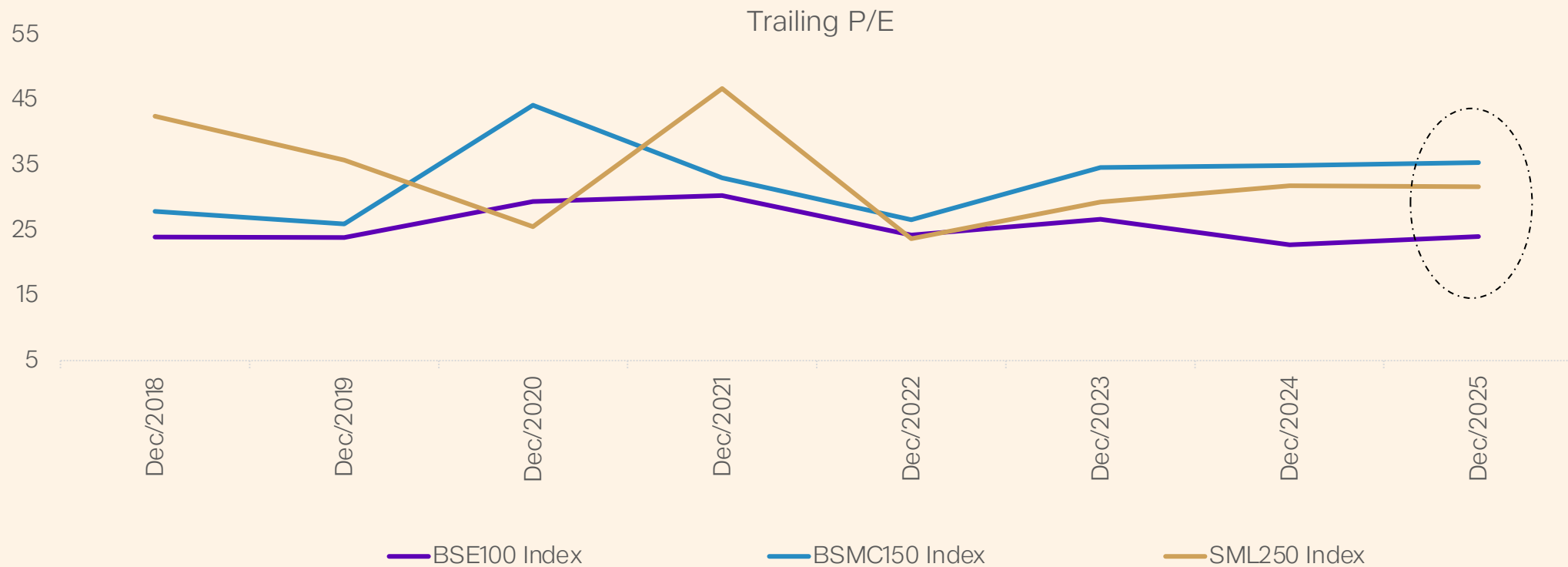
When you invest in large caps, you invest in the core of the economy

Economic leadership in BSE All Caps is concentrated at the top: the top 100 (Large Cap) dominate scale, revenues, and profitability.



Large Caps are relatively cheaper than Mid Cap and Small Caps

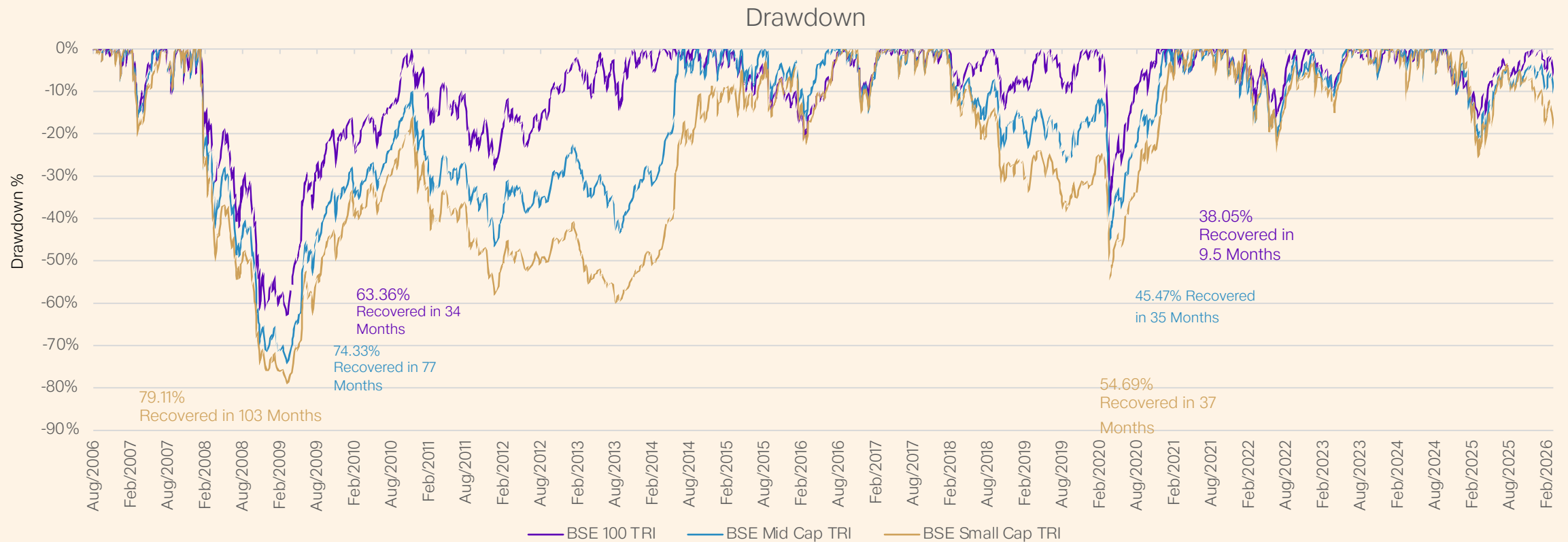
This reinforces large caps as the balance-sheet - and visibility-led segment that anchors portfolios during changing market regimes, serving as a steadier reference point across market cycles.



Source Bloomberg. Trailing P/E : 31st Dec 2018 to 31st Dec 2025; BSMC150 Index – BSE 150 MidCap Index; SML250 Index – BSE 250 SmallCap Index. Trailing P/E (price to earnings) reflects valuation based on earnings reported over the previous 12 months.

Large Caps fall less and bounce back faster, offers meaningful downside protection

In periods of market stress, large cap companies tends to demonstrate relative resilience.

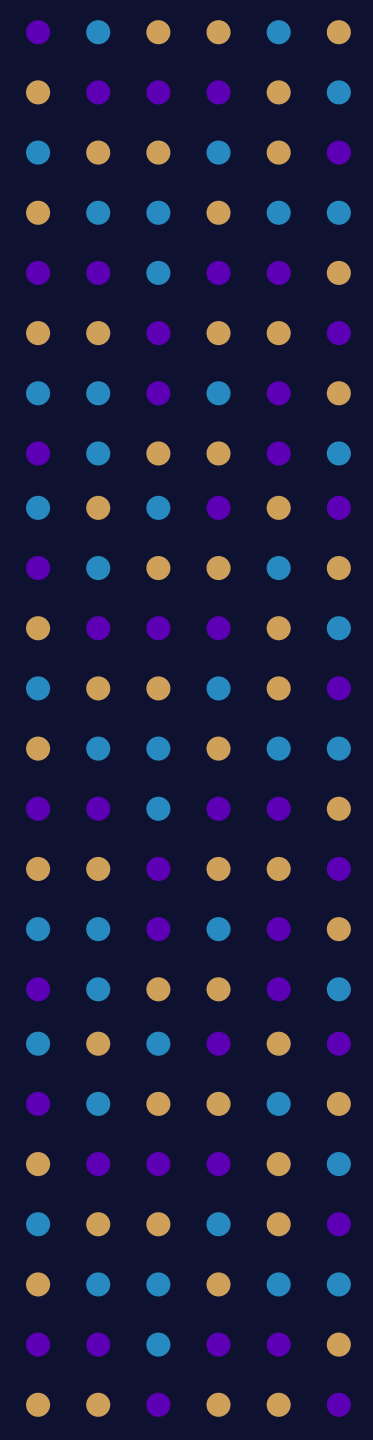


Source: Bloomberg, MFI 360, Internal Research. Period: 1st August 2006 to 4th March 2026. Past performance may or may not be sustained in future and is not a guarantee of any future returns. Investors should consult their financial advisors before making any investment-related decisions.



BlackRock.

Why Large Cap now?

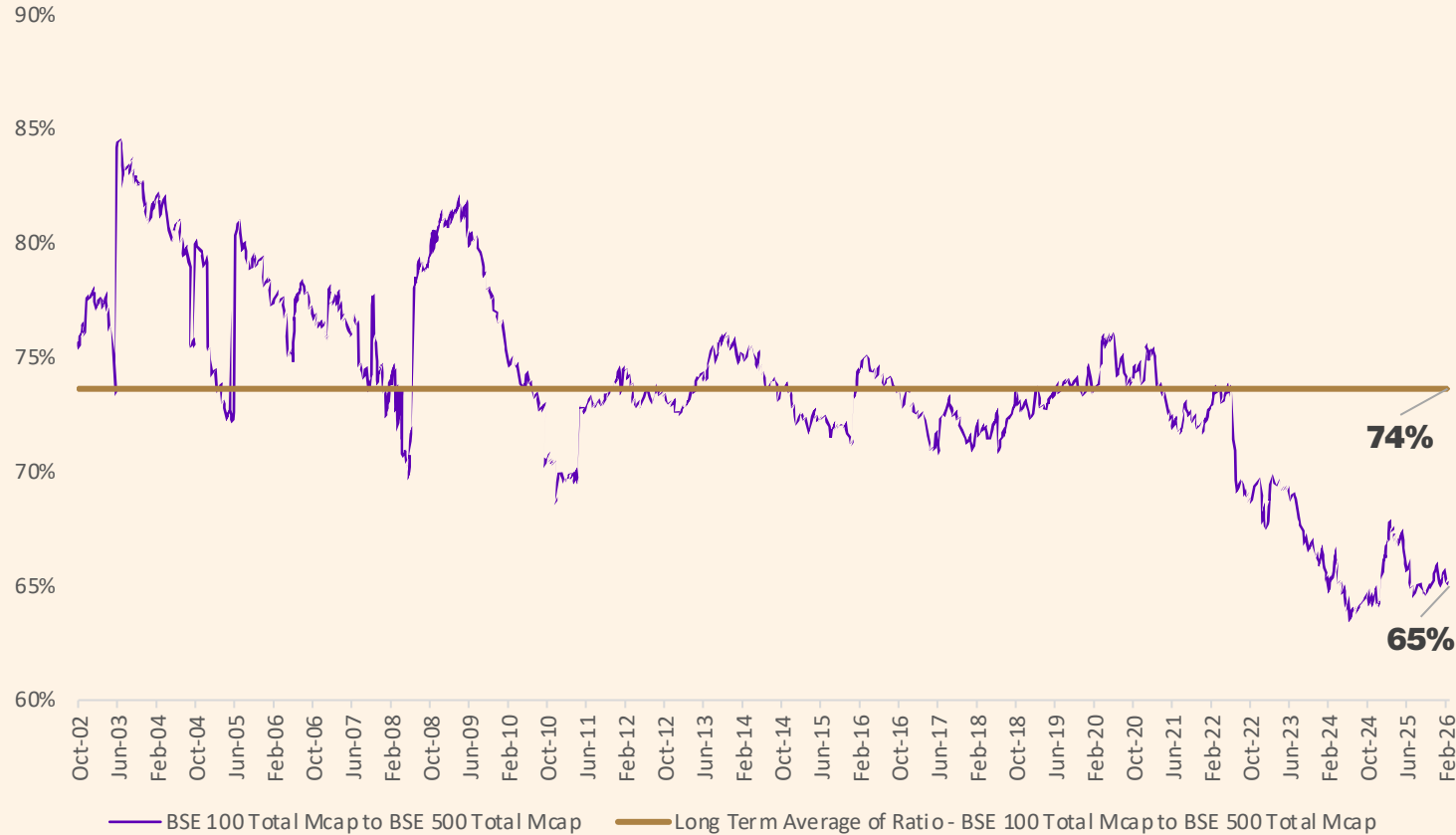


India's Rise: A multi-decade growth story

As India grows, its market leaders stand to benefit

2000	2005	2010	2015	2020	2024	2025
United States	US Country	United States	United States	United States	United States	United States
Japan	China	China	China	China	China	China
Germany	Japan	Japan	Japan	Japan	Japan	Germany
China	Germany	Germany	Germany	Germany	Germany	India
United Kingdom	United Kingdom	United Kingdom	United Kingdom	United Kingdom	India	Japan
France	France	France	France	India	United Kingdom	United Kingdom
Italy	Italy	Italy	India	France	France	France
Brazil	Brazil	Brazil	Italy	Brazil	Italy	Italy
Canada	Canada	India	Brazil	Italy	Brazil	Russia
Spain	Spain	Canada	Canada	South Korea	South Korea	Canada

Market polarization remains favourable towards Large Caps



1. Right now, large-cap stocks are cheaper compared to the rest of the market than they have been in many years.

2. This means large, well-established companies look undervalued compared to mid and small companies.

3. In the past, such gaps have usually corrected over time, which suggests large-cap stocks could perform better going ahead.

Data source: Bloomberg; Data : October 2002 to February 2026; Investors can consult their financial advisors before making any investment related decisions. Past performance may or may not be sustained in future and is not a guarantee of any future returns.

Why JioBlackRock Large Cap Fund?

Investment expertise, enhanced by technology*



Combines **human insight** and the power of **technologies** like AI, and machine learning to identify strong large-cap companies and manage risk in a structured manner.

Uses India-specific Signals research scores (Systematic Active Equity) provided by BlackRock group entities.

Built for core equity allocation



The fund focuses on investing in large-cap companies by following a disciplined framework and defined risk management processes. It is structured to provide exposures to established market leader within the large cap segment.

Delivered at a relatively low price



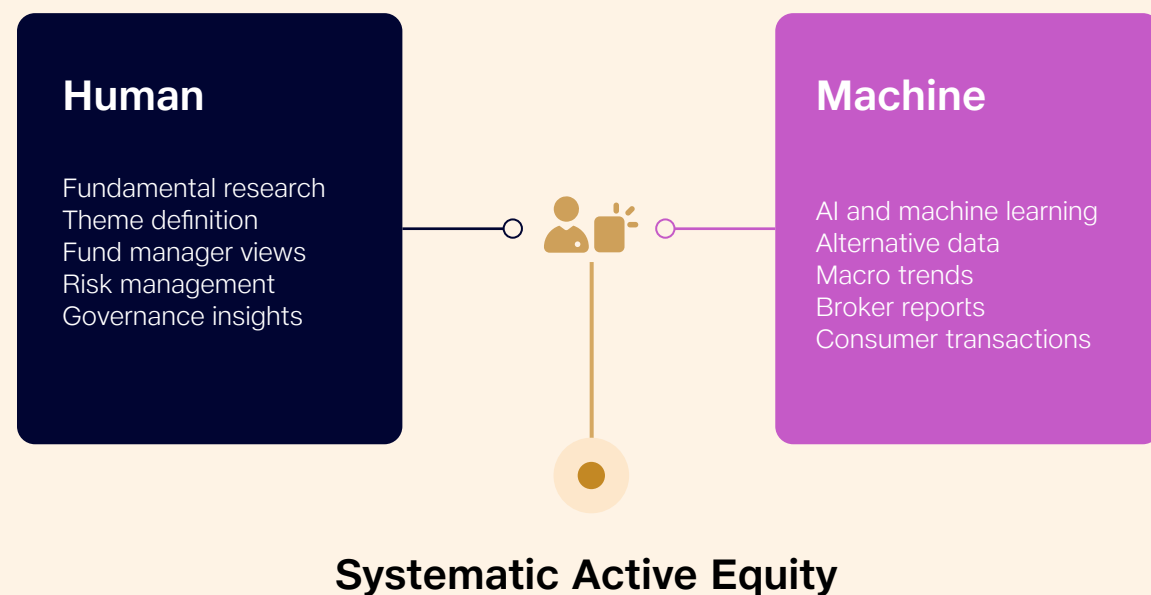
Our endeavor is to leverage technology* and shall endeavors to deliver **alpha at a relatively low price point.**

No exit load.

*Aladdin® is BlackRock's proprietary platform which is licensed to the JioBlackRock AMC. The systematic investment approach integrates the expertise of the Fund Managers with advanced signal research scores provided by entities of BlackRock group. These signal research scores are derived using big data (which includes traditional data and alternative data), and leverages machine learning, a form of artificial intelligence and advanced data analytics, which are constantly being improved.

Why SAE in Large Cap?

A technology-driven* investment approach that combines human expertise with a data-driven model to build a portfolio.



Sharpen insights | Smarter decisions | Potential wins

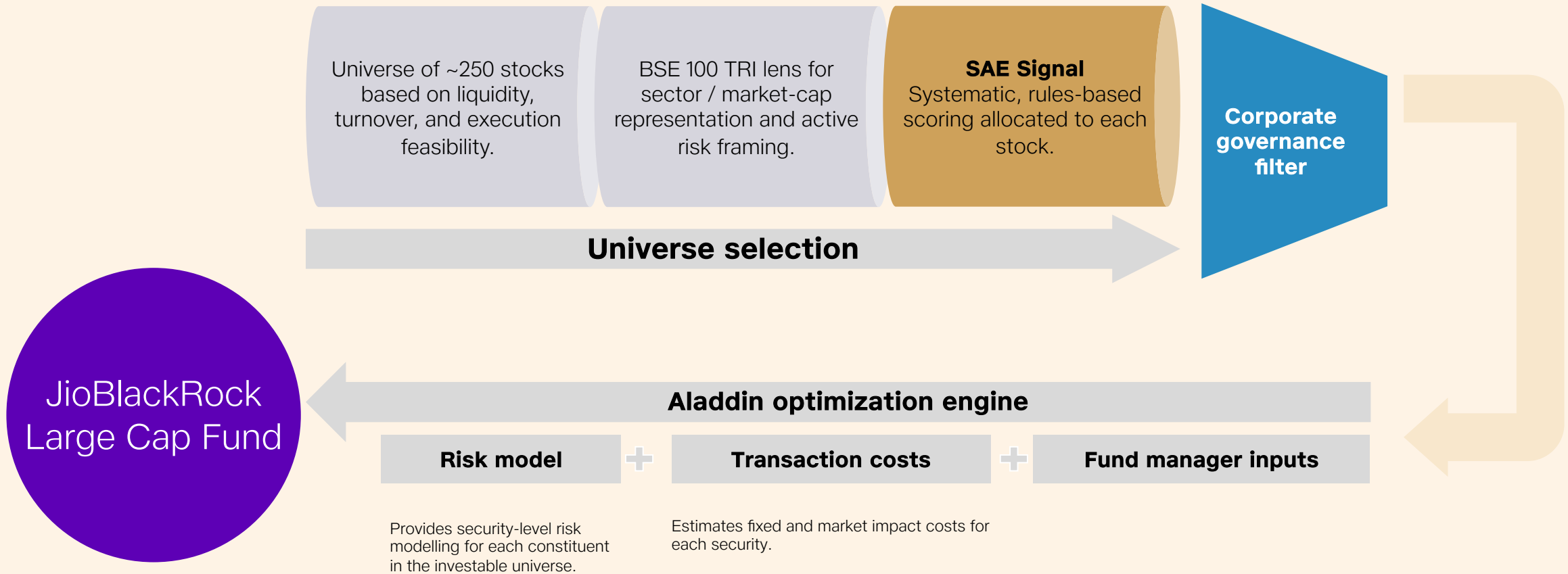
Why does this matter to you?

- 1.** Aims to measure data quickly and accurately, using real-time information to turn everyday market signals into actionable investment insights.
- 2.** Built to carefully balance risk and potential returns. By managing costs and controlling risks, it aims to deliver steady and efficient investment outcomes over time.
- 3.** Portfolio positions sized by disciplined risk budgeting and optimization processes.

Investment expertise, powered by technology.

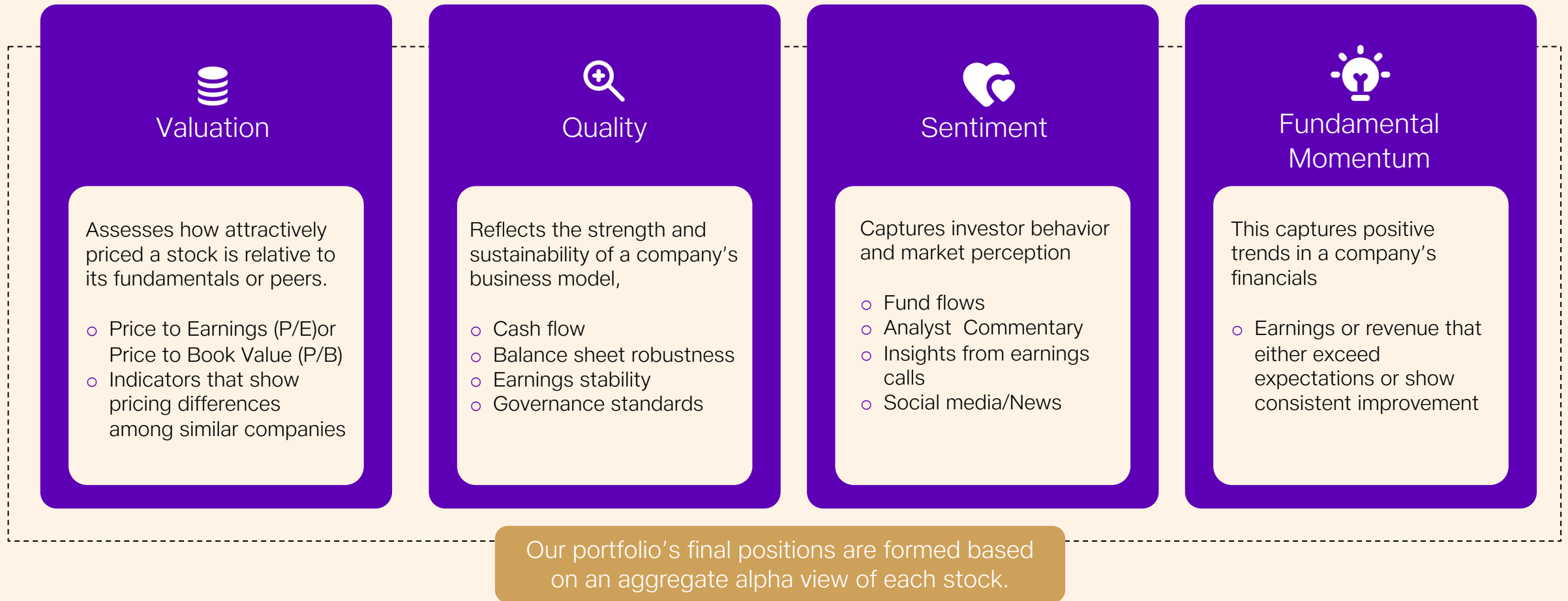
*The systematic investment approach integrates the expertise of the Fund Managers with advanced signal research scores provided by entities of BlackRock group. These signal research scores are derived using big data (which includes traditional data and alternative data), and leverages machine learning, a form of artificial intelligence and advanced data analytics, which are constantly being improved.

Investment process



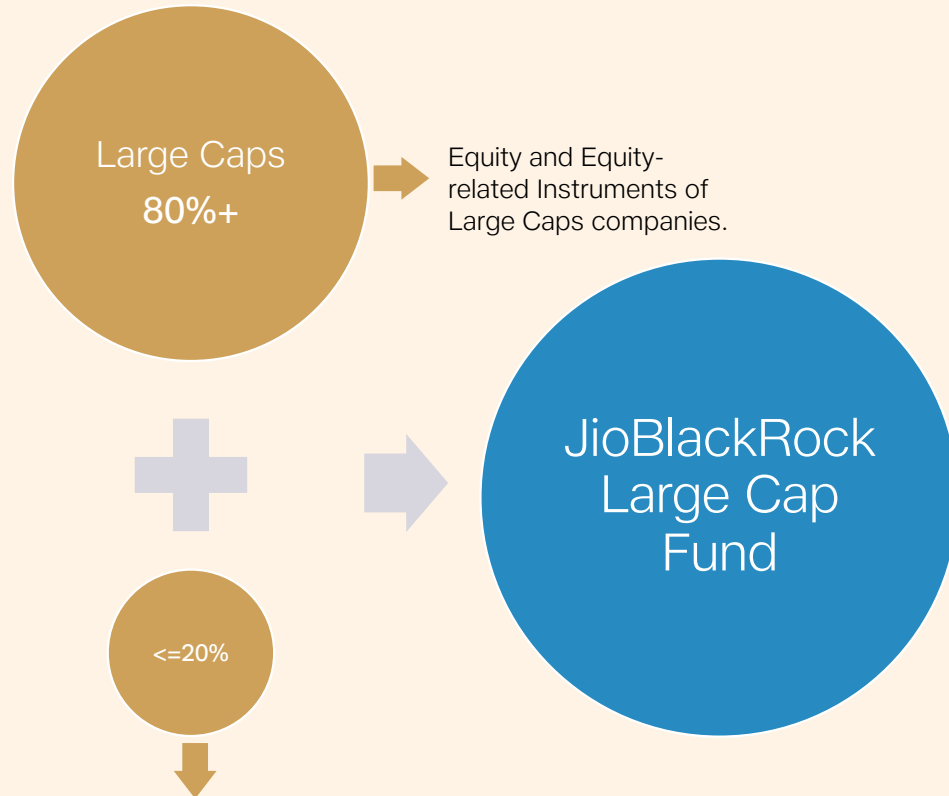
SAE signals -Illustration

We combine diverse data sources to identify the signals behind for potential returns



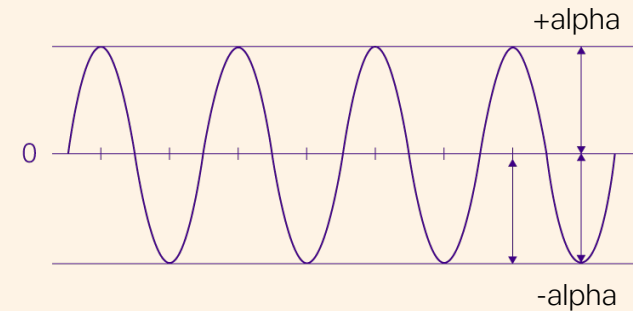
Stock selection process

We aim to target consistent returns across a wide range of diversified holdings

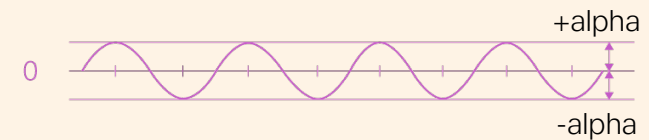


Equity and Equity-related Instruments of other than large cap companies, Money Market Instruments and other Liquid Instruments*, Gold and Silver Instruments^, Units issued by InvITs, can potentially help us create additional Alpha and add to breadth of the scheme.

Higher alpha potential comes with larger drawdowns, resulting in less consistent outcomes.



Smaller but consistent Alpha adds up over time.





*Liquid Instruments include cash, money market instruments, Government Securities, Treasury bills, Repo on Government securities, or in listed AAA rated debt securities without bespoke structures/structured obligations, credit enhancements or embedded options or any other structure/ feature which increase the liquidity risk of the instrument on a continuous basis and such investments shall be unencumbered and any other such instruments as permitted by SEBI from time to time.

^Gold and Silver Instruments include Gold and Silver ETFs & any other such instruments as permitted by SEBI from time to time. For further details kindly refer to the SID of the scheme on www.jioblackrockamc.com

We will leverage Aladdin[®] 1, BlackRock's technology platform that unifies the end-to-end investment management process

Provides a common data language to enable scale, provide insights, and support sustainable business growth – it helps us:

Understand & manage risk 

Operate more efficiently 

Uncover more opportunities for scalable growth 



~1,100

Clients using Aladdin[®] & eFront[®] technology

4,500+

Skilled engineers, financial modelers & data experts supporting Aladdin

5,000+

Risk factors produced & monitored by Aladdin

Source: BlackRock; Data as of 31st Dec 2025. ¹Aladdin is BlackRock's proprietary platform which is licensed to the JioBlackRock AMC. eFront, part of BlackRock, integrates with Aladdin[®] to offer a unified multi-asset investment technology solution for alternative and public asset management. Note: While proprietary technology platforms may help manage risk, risk cannot be eliminated.

Back test: Understanding outcomes relative to the benchmark

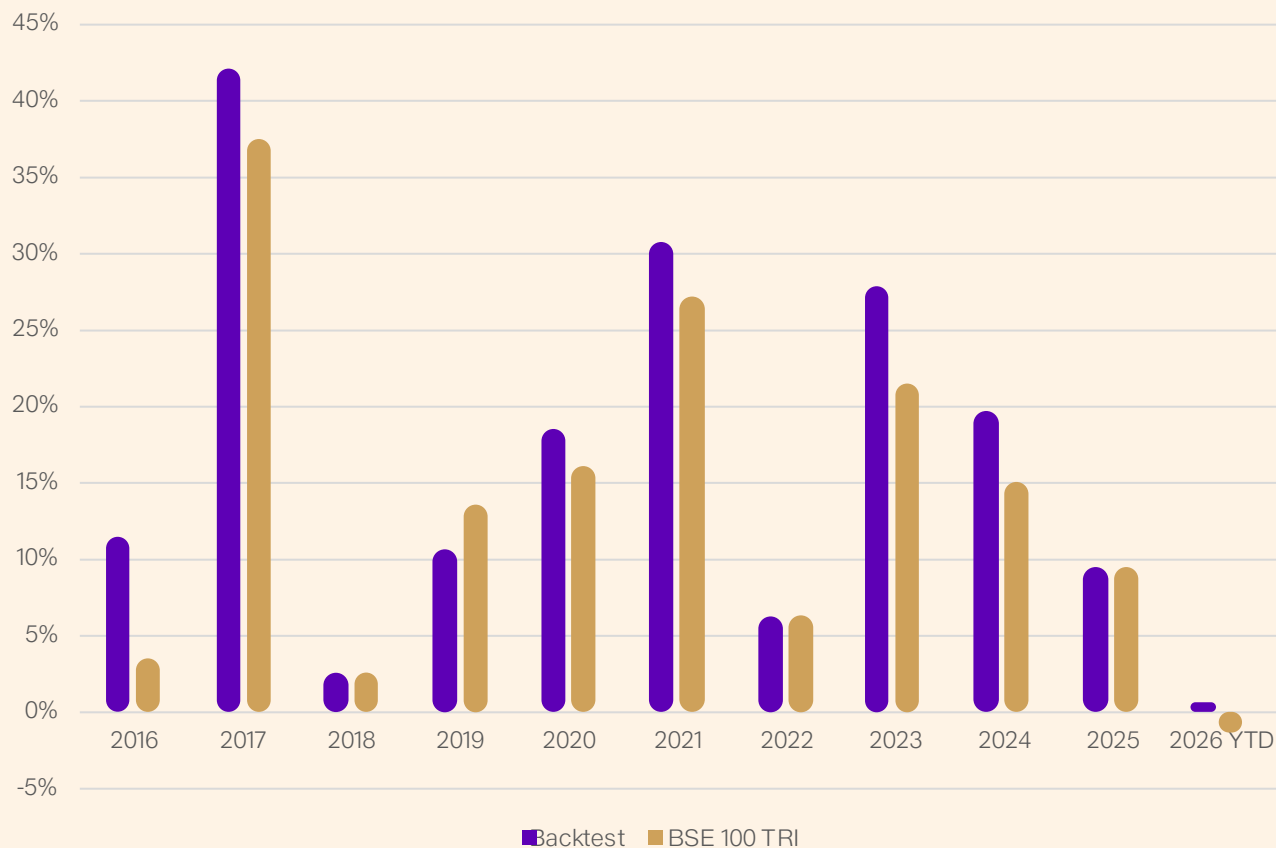


Back test data from 4th January 2016 to 26th February 2026. The Systematic Active Equity approach involves utilizing inputs from the Fund Managers with advanced signal research scores provided by entities of BlackRock group. The illustrations of the in-house back test are for understanding the Systematic Active Equity approach. The back test been done on the benchmark of BSE 100 TRI. The back test is dynamic in nature. The performance of the SAE model does not represent the performance of the scheme. Actual allocation may vary, portfolio will be managed as per the stated investment objective in the Scheme Information Document (SID). Past performance may or may not be sustained in future and is not a guarantee of any future returns. Investors cannot invest directly in an index. Investors can consult their financial advisors before making any investment related decisions.

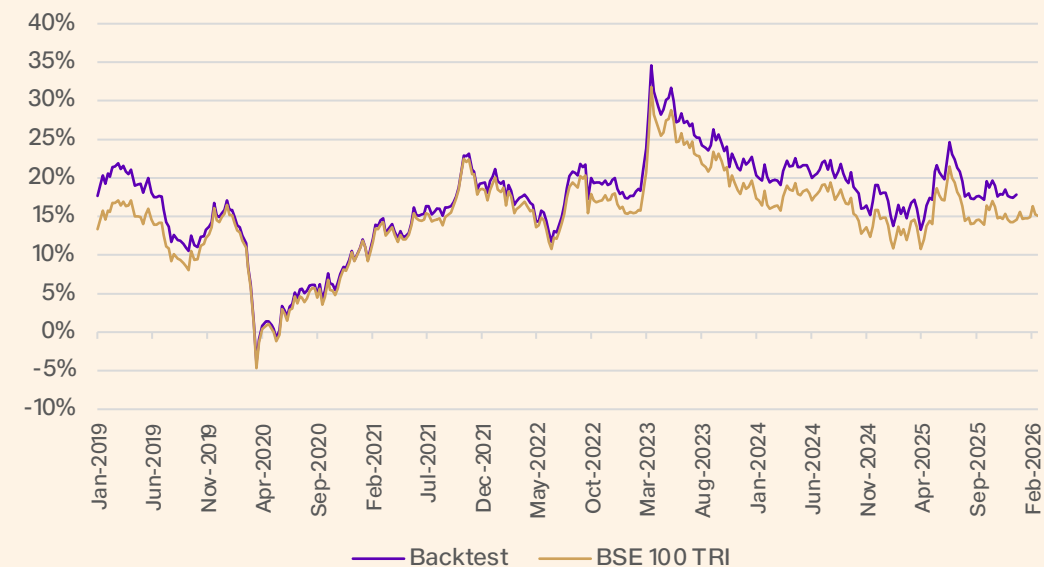
Source: BSE, Internal

Back Test – Performance patterns across different time periods

Calendar-Year-Wise Returns



3Y Rolling Returns



	Backtest	BSE 100 TRI
Average	17.00%	14.94%
Max	34.59%	31.79%
Min	-3.98%	-4.67%

Back test data from 4th January 2016 to 26th February 2026. The Systematic Active Equity approach involves utilizing inputs from the Fund Managers with advanced signal research scores provided by entities of BlackRock group. The illustrations of the in-house back test are for understanding the Systematic Active Equity approach. The back test been done on the benchmark of BSE 100 TRI. The back test is dynamic in nature. The performance of the SAE model does not represent the performance of the scheme. Actual allocation may vary, portfolio will be managed as per the stated investment objective in the Scheme Information Document (SID). Past performance may or may not be sustained in future and is not a guarantee of any future returns. Investors cannot invest directly in an index. Investors can consult their financial advisors before making any investment related decisions.

Source: BSE, Internal

Back Test: Assessing risk adjusted outcomes

Statistic	Value
10Y information ratio (BSE 100 TRI)	1.15
Portfolio CAGR (10Y)	18.35%
Portfolio volatility (Ann.) (10Y)	16.26%
BSE 100 TRI CAGR (10Y)	15.56%
BSE 100 TRI volatility (Ann.) (10Y)	16.32%

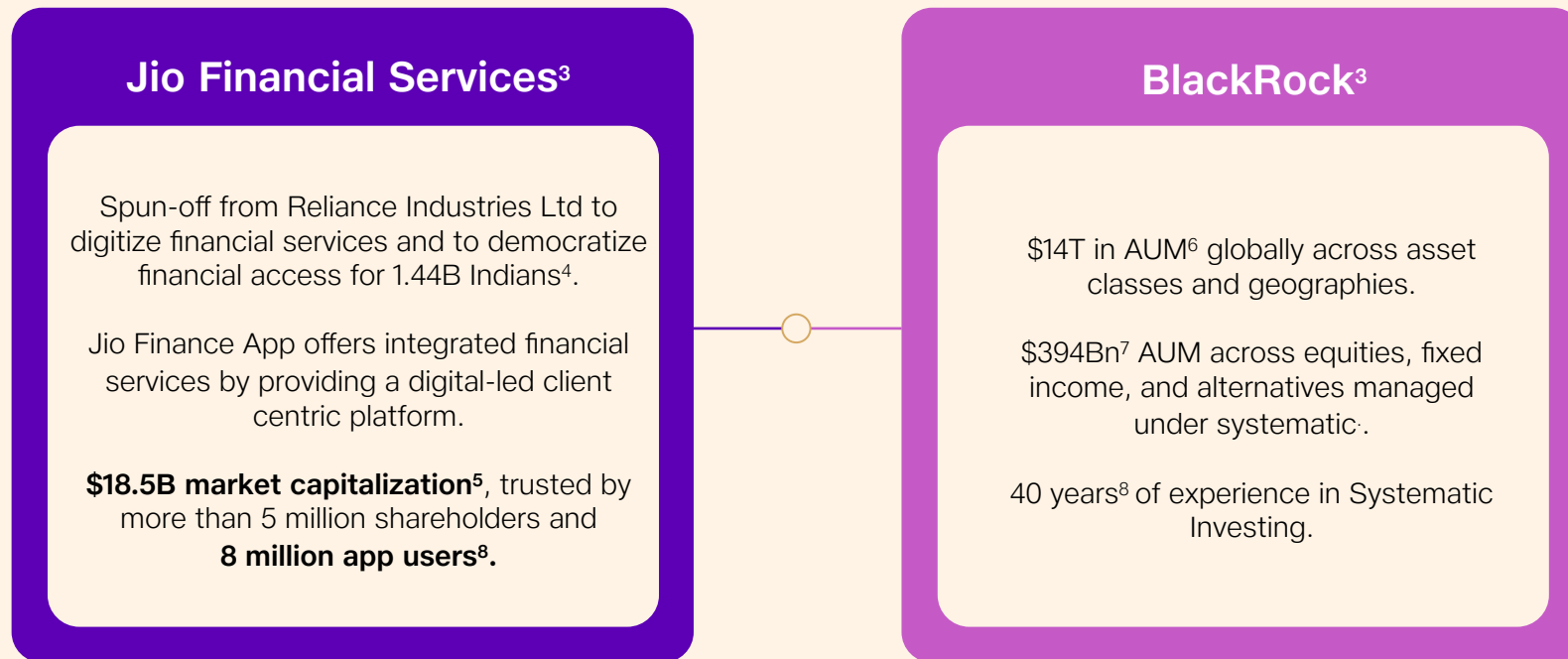
The Information Ratio (IR) is a key performance metric that evaluates how effectively an investment manager generates excess returns relative to a benchmark, considering the risk taken. A higher Information Ratio indicates better performance when compared with performance of similar schemes.

As an investor, it is essential because higher returns are not always better. Investors need to consider the risk involved. The IR helps in identifying portfolios that provide better risk-adjusted return. A higher IR suggests a fund is delivering consistent risk-adjusted outperformance.

Back test data from 4th January 2016 to 26th February 2026. The Systematic Active Equity approach involves utilizing inputs from the Fund Managers with advanced signal research scores provided by entities of BlackRock group. The illustrations of the in-house back test are for understanding the Systematic Active Equity approach. The back test been done on the benchmark of BSE 100 TRI. The back test is dynamic in nature. The performance of the SAE model does not represent the performance of the scheme. Actual allocation may vary, portfolio will be managed as per the stated investment objective in the Scheme Information Document (SID). Past performance may or may not be sustained in future and is not a guarantee of any future returns. Investors cannot invest directly in an index. Investors can consult their financial advisors before making any investment related decisions.

Source: BSE, Internal

We bring together the capabilities of the world’s largest asset manager¹ and India’s strongest brand²



(1) As of 31st March 2025, [BlackRock Financials](#), [ADV Ratings](#) (2) [Jio](#) (3) Jio Financial Services Ltd and BlackRock Financial Management Inc. (wholly owned subsidiary of BlackRock Inc.) are the sponsors for the JioBlackRock Mutual Fund (4) World Bank 2023 data (5) As of 29th Jan 2026, Bloomberg. (6) As of Q4, 2025 Source - [Annual Earnings Report](#). (7) [Source: BlackRock](#). (8) [Systematic Investing | BlackRock](#).

Market experts managing your money

Why does this matter to you?

Empowering local investors with global expertise, process and tools to manage your money.



Sid Swaminathan
MD & CEO
20 years of experience



Rishi Kohli
Chief Investment Officer
24 years of experience



Amit Bhosale
Chief Risk Officer
25 years of experience

Equity Investment Team



Sahil Chaudhary
14 years of experience



Tanvi Kacheria
14 years of experience



Haresh Mehta
18 years of experience



Anand Shah
23 years of experience



Virendra Kumar
13 years of experience

JioBlackRock Large Cap Fund

(An open-ended equity scheme predominantly investing in large cap stocks)

Powered by a global processes, designed for true-to-label equity diversification



Exposure to established and well-recognised market leaders



High liquidity and transparency within the portfolio universe

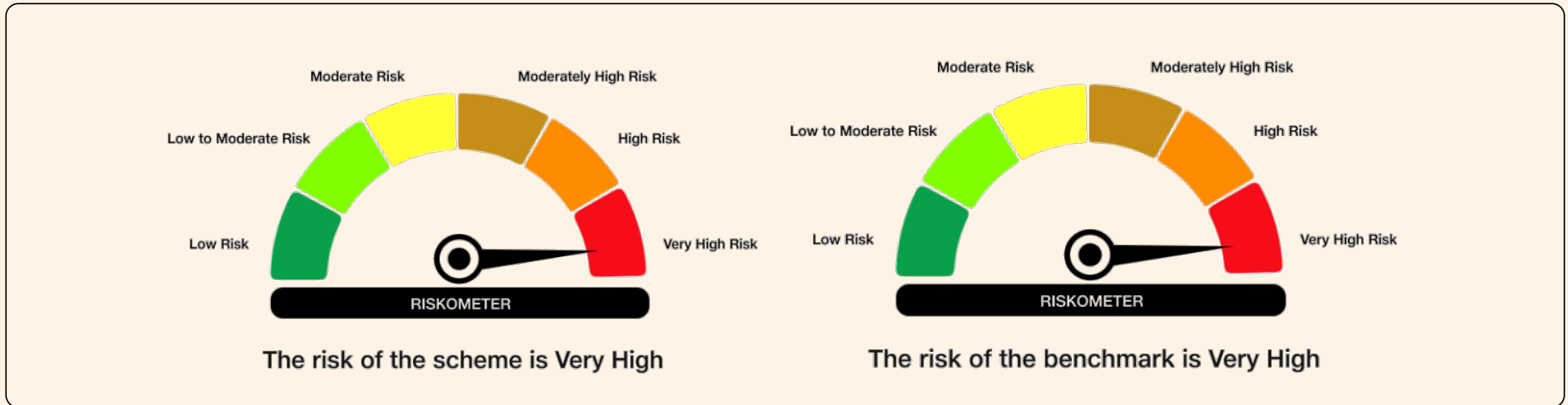


Scalable execution
Technology-led portfolio construction for transparent equity participation

Fund	
Investment objective	<p>The investment objective of the Scheme is to generate long term capital appreciation by predominantly investing in equity and equity related instruments of large-cap companies.</p> <p>There is no assurance that the investment objective of the Scheme will be achieved.</p>
Scheme category	Equity Scheme – Large Cap Fund
Benchmark	BSE 100 Index (TRI)
Exit load	NIL
Fund managers	Ms. Tanvi Kacheria, Mr. Sahil Chaudhary

Risk-o-Meter & other details

Scheme name	This product is suitable for investors who are seeking*	Fund Benchmark
JioBlackRock Large Cap Fund (An open-ended equity scheme predominantly investing in large cap stocks).	<ul style="list-style-type: none"> • Long-Term Capital Appreciation • Investment predominantly in equity and equity related instruments of large cap companies 	BSE 100 Index (TRI)



*Investors should consult their financial advisers if in doubt about whether the product is suitable for them.

Disclaimer

This document is for informational purposes only and does not constitute investment advice or constitute an offer or solicitation to sell or buy any securities. This document is for intended recipients only. The views expressed herein are based on internal data, publicly available information and other sources believed to be reliable. The document does not have regard to specific investment objectives, financial situation and the particular needs of any specific person who may receive this document. There is no assurance that any investment strategy or Scheme will achieve its objectives or avoid losses. Certain statements in this document may contain forward-looking information, including projections, estimates, and other statements regarding future events or the future financial performance of the Scheme. These statements are based on current expectations and assumptions and actual results may differ materially due to various risks and uncertainties. The value of investments may fluctuate and there is no assurance or guarantee that the investment objectives of the Scheme will be achieved. Past performance of the sponsors, asset management company or any Scheme of the fund does not guarantee or indicate future results/returns. Neither the AMC, Trustee Company, sponsors or its affiliates nor any person connected with them shall accept any liability arising from the use of this document.

Investors are advised to read all scheme-related documents carefully before investing. Investment in mutual funds involves risks, including the possible loss of principal.

The recipient(s) before acting on any information herein should make his/her/their own investigation and seek appropriate professional advice and shall alone be fully responsible / liable for any decision taken on the basis of information contained herein.

Mutual Fund investments are subject to market risks, read all scheme related documents carefully.